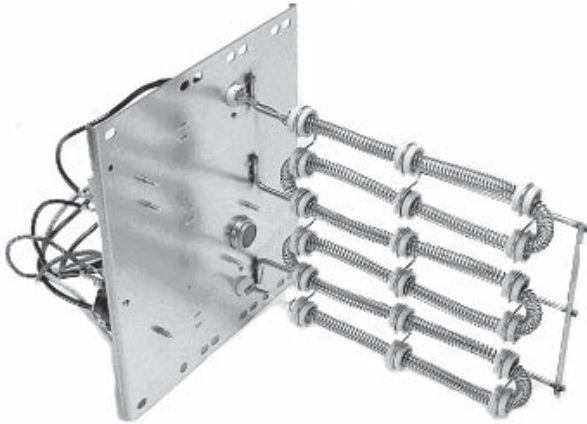


## PRODUCT SPECIFICATIONS



## FOR AIR HANDLERS AND PACKAGED ELECTRIC UNITS

## ELECTRIC HEAT KITS

The Whirlpool<sup>®</sup> brand HKR Electric Heat Kits are for use with Whirlpool<sup>®</sup> brand air handlers and modular blowers as well as packaged electric/heat pump units. These versatile heat kits are designed for easy installation in the field and cover a wide range of applications.

### Standard Features

- Sequencers for better temperature control
- Multiple branch circuit capability
- Completely assembled and tested
- Built-in overcurrent protection on all units (as indicated in the Electrical Data)
- Control circuitry arranged to readily permit staging
- Factory-installed circuit breakers available on specific models (See Electrical Data)
- Fuse link secondary high-temperature limit control
- Plug-in wiring harness for ease on installation into air handler
- Rust-resistant nickel chromium heat elements
- ETL Listed





## AIR HANDLER ELECTRICAL DATA

Model & Heat Kit Usage	Circuit 1			Circuit 2		
	Heater Amps	MCA <sup>1</sup>	MOP <sup>2</sup>	Heater Amps	MCA <sup>1</sup>	MOP <sup>2</sup>
<b>WAHMV1830P4A</b>	0 / 0	2.5 / 2.5	15 / 15	---	--	--
HKR-05*, HKR-05C*	17.1 / 19.8	24 / 27	30 / 30	---	--	--
HKR-08*, HKR-08C*	25.3 / 29.2	34 / 39	40 / 40	---	--	--
HKR-10*, HKR-10C*	34.3 / 39.6	45 / 52	60 / 60	---	--	--
<b>WAHMV3030P4A</b>	0 / 0	3.1 / 3.1	15 / 15	---	--	--
HKR-08*, HKR-08C*	25.3 / 29.2	35 / 40	40 / 40	---	--	--
HKR-10*, HKR-10C*	34.3 / 39.6	46 / 53	60 / 60	---	--	--
HKR-15C*	34.3 / 39.6	46 / 53	60 / 60	17.2 / 19.8	22/25	30 / 30
<b>WAHMV4260P4A</b>	0 / 0	7.8 / 7.8	15 / 15	---	--	--
HKR-10*, HKR-10C*	34.3 / 39.6	51 / 57	60 / 60	---	--	--
HKR-15C*	34.3 / 39.6	51 / 57	60 / 60	17.2 / 19.8	21/25	30 / 30
HKR-20C*	34.3 / 39.6	51 / 57	60 / 60	34.3 / 39.6	43/50	60 / 60
HKR-21C*	37.9 / 43.8	54 / 60	60 / 60	37.9 / 43.8	48/55	60 / 60
<b>WAHMV1830P4B</b>	0 / 0	2.5 / 2.5	15 / 15	---	---	---
HKR-03*	10.8 / 12.5	16 / 18.1	20 / 20	---	---	---
HKR-05* / 05C*	17.1 / 19.8	24 / 27	30 / 30	---	---	---
HKR-06*	21.6 / 25.0	30 / 34	40 / 40	---	---	---
HKR-08* / -08C*	25.3 / 29.2	34 / 39	40 / 40	---	---	---
HKR-10* / -10C*	34.3 / 39.6	45 / 52	60 / 60	---	---	---
<b>WAHMV3036P4B</b>	0 / 0	3.1 / 3.1	15 / 15	---	---	---
HKR-03*	10.8 / 12.5	17 / 19	20 / 20	---	---	---
HKR-05* / 05C*	17.1 / 19.8	24 / 28	30 / 30	---	---	---
HKR-06*	21.6 / 25.0	30 / 34	40 / 40	---	---	---
HKR-08* / -08C*	25.3 / 29.2	35 / 40	40 / 40	---	---	---
HKR-10* / -10C*	34.3 / 39.6	46 / 53	60 / 60	---	---	---
HKR-15C*	34.3 / 39.6	46 / 53	60 / 60	17.2 / 19.8	22 / 25	30 / 30
<b>WAHMV4260P4B</b>	0 / 0	7.8 / 7.8	15 / 15	---	---	---
HKR-03*	10.8 / 12.5	21 / 24	30 / 30	---	---	---
HKR-05* / 05C*	17.1 / 19.8	29 / 33	40 / 40	---	---	---
HKR-06*	21.6 / 25.0	34.8 / 39	40 / 40	---	---	---
HKR-08* / -08C*	25.3 / 29.2	39 / 44	60 / 60	---	---	---
HKR-10* / -10C*	34.3 / 39.6	51 / 57	60 / 60	---	---	---
HKR-15C*	34.3 / 39.6	51 / 57	60 / 60	17.2 / 19.8	22 / 25	30 / 30
HKR-20C*	34.3 / 39.6	51 / 57	60 / 60	34.3 / 39.6	43 / 50	60 / 60
HKR-21C*	37.9 / 43.8	54 / 60	60 / 60	37.9 / 43.8	48 / 55	60 / 60
<b>WAHME1860P4**</b>	0 / 0	3.1 / 3.1	15 / 15	---	---	---
HKR-03*	10.8 / 12.5	19 / 21	20 / 20	---	---	---
HKR-05* / -05C*	17.1 / 19.8	27 / 30	30 / 30	---	---	---
HKR-06*	21.6 / 25.0	32 / 37	40 / 40	---	---	---
HKR-08* / -08C*	25.3 / 29.2	37 / 39	40 / 40	---	---	---
HKR-10* / -10C*	34.3 / 39.6	48 / 55	60 / 60	---	---	---
HKR-15C*	34.3 / 39.6	46 / 53	60 / 60	17.2 / 19.8	21 / 25	30 / 30
^HKR3-15*	0 / 0	3.1 / 3.1	15 / 15	31.2 / 36.1	39 / 45	60 / 60
<b>WAHME3036P4**</b>	0 / 0	3.8 / 3.8	15 / 15	---	---	---
HKR-03*	10.8 / 12.5	15 / 17	20 / 20	---	---	---
HKR-05* / -05C*	17.1 / 19.8	24 / 27	30 / 30	---	---	---
HKR-06*	21.6 / 25.0	32 / 37	40 / 40	---	---	---
HKR-08* / -08C*	25.3 / 29.2	35 / 40	40 / 40	---	---	---
HKR-10* / -10C*	34.3 / 39.6	48 / 55	60 / 60	---	---	---
HKR-15C*	34.3 / 39.6	46 / 53	60 / 60	17.2 / 19.8	21 / 25	30 / 30
HKR-20C*	34.3 / 39.6	51 / 57	60 / 60	34.3 / 39.6	43 / 50	60 / 60
HKR-21C*	37.9 / 43.8	54 / 60	60 / 60	37.9 / 43.8	48 / 55	60 / 60
^HKR3-15*	0 / 0	3.8 / 3.8	15 / 15	31.2 / 36.1	39 / 45	60 / 60
^HKR3-20*	0 / 0	3.8 / 3.8	15 / 15	40.6 / 46.9	51 / 59	60 / 60

# PRODUCT SPECIFICATIONS

## AIR HANDLER ELECTRICAL DATA (CONT.)

Model & Heat Kit Usage	Circuit 1			Circuit 2		
	Heater Amps	MCA <sup>1</sup>	MOP <sup>2</sup>	Heater Amps	MCA <sup>1</sup>	MOP <sup>2</sup>
<b>WAHME4260P4**</b>	0 / 0	5.3 / 5.3	15 / 15	---	---	---
HKR-03*	10.8 / 12.5	15 / 17	20 / 20	---	---	---
HKR-05* / -05C*	17.1 / 19.8	24 / 27	30 / 30	---	---	---
HKR-06*	21.6 / 25.0	32 / 37	40 / 40	---	---	---
HKR-08* / -08C*	25.3 / 29.2	35 / 40	40 / 40	---	---	---
HKR-10* / -10C*	34.3 / 39.6	46 / 53	60 / 60	---	---	---
HKR-15C*	34.3 / 39.6	51 / 57	60 / 60	17.2 / 19.8	21 / 25	30 / 30
HKR-20C*	34.3 / 39.6	51 / 57	60 / 60	34.3 / 39.6	43 / 50	60 / 60
HKR-21C*	37.9 / 43.8	54 / 60	60 / 60	37.9 / 43.8	48 / 55	60 / 60
^HKR3-15*	0 / 0	5.3 / 5.3	15 / 15	31.2 / 36.1	39 / 45	60 / 60
^HKR3-20*	0 / 0	5.3 / 5.3	15 / 15	40.6 / 46.9	51 / 59	60 / 60
<b>WAHMS1824P4**</b>	0 / 0	2.1 / 2.1	15 / 15	---	---	---
HKR-03*	10.8 / 12.5	16 / 18	20 / 20	---	---	---
HKR-05* / 05C*	17.1 / 19.8	24 / 27	30 / 30	---	---	---
HKR-06*	21.6 / 25.0	30 / 34	40 / 40	---	---	---
HKR-08* / -08C*	25.2 / 29.1	34 / 39	40 / 40	---	---	---
HKR-10* / -10C*	34.3 / 39.6	45 / 52	60 / 60	---	---	---
HKR-15C*	34.3 / 39.6	45 / 52	60 / 60	17.2 / 19.8	22 / 25	30 / 30
<b>WAHMS1931P4**</b>	0 / 0	1.9 / 1.9	15 / 15	---	---	---
HKR-03*	10.8 / 12.5	15 / 17	20 / 20	---	---	---
HKR-05* / 05C*	17.1 / 19.8	23 / 27	30 / 30	---	---	---
HKR-06*	21.6 / 25.0	29 / 33	40 / 40	---	---	---
HKR-08* / -08C*	25.2 / 29.1	33 / 38	40 / 40	---	---	---
HKR-10* / -10C*	34.3 / 39.6	45 / 51	60 / 60	---	---	---
HKR-15C*	34.3 / 39.6	45 / 51	60 / 60	17.2 / 19.8	22 / 25	30 / 30
<b>WAHMS3030P4**</b>	0 / 0	3.3 / 3.3	15 / 15	---	---	---
HKR-03*	10.8 / 12.5	17 / 19	20 / 20	---	---	---
HKR-05* / 05C*	17.1 / 19.8	25 / 28	30 / 30	---	---	---
HKR-06*	21.6 / 25.0	30 / 35	40 / 40	---	---	---
HKR-08* / -08C*	25.2 / 29.1	35 / 40	40 / 40	---	---	---
HKR-10* / -10C*	34.3 / 39.6	46 / 53	60 / 60	---	---	---
HKR-15C*	34.3 / 39.6	46 / 53	60 / 60	17.2 / 19.8	22 / 25	30 / 30
HKR-20C*	34.3 / 39.6	46 / 53	60 / 60	34.3 / 39.6	43 / 49	60 / 60
HKR-21C*	37.9 / 43.8	51 / 58	60 / 60	37.9 / 43.8	48 / 55	60 / 60
^HKR3-15*	0 / 0	3.3 / 3.3	15 / 15	31.2 / 36.1	39 / 45	60 / 60
^HKR3-20*	0 / 0	3.3 / 3.3	15 / 15	40.6 / 46.9	51 / 59	60 / 60
<b>WAHMS3642P4**</b>	0 / 0	3.7 / 3.7	15 / 15	---	---	---
HKR-03*	10.8 / 12.5	17 / 19	20 / 20	---	---	---
HKR-05* / 05C*	17.1 / 19.8	25 / 28	30 / 30	---	---	---
HKR-06*	21.6 / 25.0	31 / 35	40 / 40	---	---	---
HKR-08* / -08C*	25.2 / 29.1	35 / 40	40 / 40	---	---	---
HKR-10* / -10C*	34.3 / 39.6	47 / 53	60 / 60	---	---	---
HKR-15C*	34.3 / 39.6	47 / 53	60 / 60	17.2 / 19.8	22 / 25	30 / 30
HKR-20C*	34.3 / 39.6	47 / 53	60 / 60	34.3 / 39.6	43 / 49	60 / 60
HKR-21C*	37.9 / 43.8	51 / 58	60 / 60	37.9 / 43.8	48 / 55	60 / 60
^HKR3-15*	0 / 0	3.7 / 3.7	15 / 15	31.2 / 36.1	39 / 45	60 / 60
^HKR3-20*	0 / 0	3.7 / 3.7	15 / 15	40.6 / 46.9	51 / 59	60 / 60

## AIR HANDLER ELECTRICAL DATA (CONT.)

Model & Heat Kit Usage	Circuit 1			Circuit 2		
	Heater Amps	MCA <sup>1</sup>	MOP <sup>2</sup>	Heater Amps	MCA <sup>1</sup>	MOP <sup>2</sup>
<b>WAHMS3743P4**</b>	0 / 0	4.2 / 4.2	15 / 15	---	---	---
HKR-03*	10.8 / 12.5	18 / 20	20 / 20	---	---	---
HKR-05* / 05C*	17.1 / 19.8	26 / 29	30 / 30	---	---	---
HKR-06*	21.6 / 25.0	31 / 35	40 / 40	---	---	---
HKR-08* / -08C*	25.2 / 29.1	36 / 41	40 / 40	---	---	---
HKR-10* / -10C*	34.3 / 39.6	47 / 54	60 / 60	---	---	---
HKR-15C*	34.3 / 39.6	47 / 54	60 / 60	17.2 / 19.8	22 / 25	30 / 30
HKR-20C*	34.3 / 39.6	47 / 54	60 / 60	34.3 / 39.6	43 / 49	60 / 60
HKR-21C*	37.9 / 43.8	52 / 59	60 / 60	37.9 / 43.8	48 / 55	60 / 60
^HKR3-15*	0 / 0	4.2 / 4.2	15 / 15	31.2 / 36.1	39 / 45	60 / 60
^HKR3-20*	0 / 0	4.2 / 4.2	15 / 15	40.6 / 46.9	51 / 59	60 / 60
<b>WAHMS4860P4**</b>	0 / 0	5.4 / 5.4	15 / 15	---	---	---
HKR-03*	10.8 / 12.5	19 / 21	20 / 20	---	---	---
HKR-05* / 05C*	17.1 / 19.8	27 / 30	30 / 30	---	---	---
HKR-06*	21.6 / 25.0	32 / 37	40 / 40	---	---	---
HKR-08* / -08C*	25.2 / 29.1	37 / 39	40 / 40	---	---	---
HKR-10* / -10C*	34.3 / 39.6	48 / 55	60 / 60	---	---	---
HKR-15C*	34.3 / 39.6	48 / 55	60 / 60	17.2 / 19.8	22 / 25	30 / 30
HKR-20C*	34.3 / 39.6	48 / 55	60 / 60	34.3 / 39.6	43 / 49	60 / 60
HKR-21C*	37.9 / 43.8	53 / 59	60 / 60	37.9 / 43.8	48 / 55	60 / 60
^HKR3-15*	0 / 0	5.4 / 5.4	15 / 15	31.2 / 36.1	39 / 45	60 / 60
^HKR3-20*	0 / 0	5.4 / 5.4	15 / 15	40.6 / 46.9	51 / 59	60 / 60

<sup>1</sup> Minimum Circuit Ampacity (Heater Amps + Motor Amps) X 1.25

<sup>2</sup> Maximum Overcurrent Protection = 2.25 X Motor Amps + Heater Amps

^ Circuit 1: Single-phase for Air Handlers    Circuit 2: Three-phase for HKR3 Heater Kits

\* Revision level that may or may not be designated

C = Circuit Breaker Option

--- indicates Not Required

# PRODUCT SPECIFICATIONS

## AIR HANDLER ELECTRICAL DATA (CONT.)

Model & Heat Kit Usage	Circuit 1			Circuit 2		
	Heater Amps	MCA <sup>1</sup>	MOP <sup>2</sup>	Heater Amps	MCA <sup>1</sup>	MOP <sup>2</sup>
<b>WMAHM0800A*</b>	0 / 0	1.9 / 1.9	15 / 15	---	---	---
HKR-03*	10.8 / 12.5	15 / 17	20 / 20	---	---	---
HKR-05* / 05C*	17.1 / 19.8	23 / 26	30 / 30	---	---	---
HKR-06*	21.6 / 25.0	29 / 33	40 / 40	---	---	---
HKR-08* / -08C*	25.3 / 29.2	33 / 38	40 / 40	---	---	---
HKR-10* / -10C*	34.3 / 39.6	44 / 51	60 / 60	---	---	---
<b>WMAHM1200A*</b>	0 / 0	3.0 / 3.0	15 / 15	---	---	---
HKR-03*	10.8 / 12.5	16 / 18	20 / 20	---	---	---
HKR-05* / 05C*	17.1 / 19.8	24 / 27	40 / 40	---	---	---
HKR-06*	21.6 / 25.0	29 / 34	40 / 40	---	---	---
HKR-08* / -08C*	25.3 / 29.2	34 / 39	40 / 40	---	---	---
HKR-10* / -10C*	34.3 / 39.6	45 / 52	60 / 60	---	---	---
HKR-15C*	34.3 / 39.6	45 / 52	60 / 60	17.2 / 19.8	22 / 25	30 / 30
HKR-20C*	34.3 / 39.6	45 / 52	60 / 60	34.3 / 39.6	43 / 50	60 / 60
HKR-21C*	37.9 / 43.8	50 / 57	60 / 60	37.9 / 43.8	47 / 55	60 / 60
^HKR3-15*	0 / 0	3.0 / 3.0	15 / 15	31.2 / 36.1	39 / 45	60 / 60
^HKR3-20*	0 / 0	3.0 / 3.0	15 / 15	40.6 / 46.9	51 / 59	60 / 60
<b>WMAHM1600A*</b>	0 / 0	3.8 / 3.8	15 / 15	---	---	---
HKR-03*	10.8 / 12.5	17 / 19	20 / 20	---	---	---
HKR-05* / 05C*	17.1 / 19.8	24 / 28	40 / 40	---	---	---
HKR-06*	21.6 / 25.0	30 / 34	40 / 40	---	---	---
HKR-08* / -08C*	25.3 / 29.2	35 / 39	40 / 40	---	---	---
HKR-10* / -10C*	34.3 / 39.6	46 / 53	60 / 60	---	---	---
HKR-15C*	34.3 / 39.6	46 / 53	60 / 60	17.2 / 19.8	22 / 25	30 / 30
HKR-20C*	34.3 / 39.6	46 / 53	60 / 60	34.3 / 39.6	43 / 50	60 / 60
HKR-21C*	37.9 / 43.8	50 / 58	60 / 60	37.9 / 43.8	47 / 55	60 / 60
^HKR3-15*	0 / 0	3.8 / 3.8	15 / 15	31.26 / 36.1	39 / 45	60 / 60
^HKR3-20*	0 / 0	3.8 / 3.8	15 / 15	40.6 / 46.9	51 / 59	60 / 60
<b>WMAHM2000A*</b>	0 / 0	4.9 / 4.9	15 / 15	---	---	---
HKR-03*	10.8 / 12.5	17 / 20	20 / 20	---	---	---
HKR-05* / 05C*	17.1 / 19.8	25 / 29	40 / 40	---	---	---
HKR-06*	21.6 / 25.0	31 / 35	40 / 40	---	---	---
HKR-08* / -08C*	25.3 / 29.2	36 / 40	60 / 60	---	---	---
HKR-10* / -10C*	34.3 / 39.6	47 / 53	60 / 60	---	---	---
HKR-15C*	34.3 / 39.6	47 / 53	60 / 60	17.2 / 19.8	22 / 25	30 / 30
HKR-20C*	34.3 / 39.6	47 / 53	60 / 60	34.3 / 39.6	43 / 50	60 / 60
HKR-21C*	37.9 / 43.8	51 / 59	60 / 60	37.9 / 43.8	47 / 55	60 / 60
^HKR3-15*	0 / 0	4.9 / 4.9	15 / 15	31.2 / 36.1	39 / 45	60 / 60
^HKR3-20*	0 / 0	4.9 / 4.9	15 / 15	40.6 / 46.9	51 / 59	60 / 60

## AIR HANDLER ELECTRICAL DATA (CONT.)

Model & Heat Kit Usage	Circuit 1			Circuit 2		
	Heater Amps	MCA <sup>1</sup>	MOP <sup>2</sup>	Heater Amps	MCA <sup>1</sup>	MOP <sup>2</sup>
<b>WMAHV1200AA*</b>	0 / 0	3.1 / 3.1	15 / 15	--	--	--
HKR-08*, HKR-08C*	25.3 / 29.2	34 / 39	40 / 40	--	--	--
HKR-10*, HKR-10C*	34.3 / 39.6	45 / 52	60 / 60	--	--	--
HKR-15C*	34.3 / 39.6	45 / 52	60 / 60	17.2/19.8	22/25	30 / 30
<b>WMAHV1600AA*</b>	0 / 0	5.6 / 5.6	15 / 15	---	--	--
HKR-10*, HKR-10C*	34.3 / 39.6	47 / 54	60 / 60	---	--	--
HKR-15C*	34.3 / 39.6	47 / 54	60 / 60	17.2/19.8	22/25	30 / 30
<b>WMAHV2000AA*</b>	0 / 0	4.4 / 4.4	15 / 15	--	--	--
HKR-10*, HKR-10C*	34.3 / 39.6	46 / 53	60 / 60	--	--	--
HKR-15C*	34.3 / 39.6	46 / 53	60 / 60	17.2/19.8	22/25	30 / 30
HKR-20C*	34.3 / 39.6	46 / 53	60 / 60	34.3 / 39.6	43 / 50	60 / 60
<b>WMAHV1200AB*</b>	0 / 0	3.1 / 3.1	15 / 15	---	---	---
HKR-03*	10.8 / 12.5	17 / 19	20 / 20	---	---	---
HKR-05* / 05C*	17.1 / 19.8	24 / 28	30 / 30	---	---	---
HKR-06*	21.6 / 25.0	30 / 34	40 / 40	---	---	---
HKR-08* / -08C*	25.3 / 29.2	34 / 39	40 / 40	---	---	---
HKR-10* / -10C*	34.3 / 39.6	45 / 52	60 / 60	---	---	---
HKR-15C*	34.3 / 39.6	45 / 52	60 / 60	17.2 / 19.8	22 / 25	30 / 30
<b>WMAHV1600AB*</b>	0 / 0	5.6 / 5.6	15 / 15	---	---	---
HKR-03*	10.8 / 12.5	19 / 21	30 / 30	---	---	---
HKR-05* / 05C*	17.1 / 19.8	27 / 30	40 / 40	---	---	---
HKR-06*	21.6 / 25.0	33 / 37	40 / 40	---	---	---
HKR-08* / -08C*	25.3 / 29.2	37 / 42	60 / 60	---	---	---
HKR-10* / -10C*	34.3 / 39.6	47 / 54	60 / 60	---	---	---
HKR-15C*	34.3 / 39.6	47 / 54	60 / 60	17.2 / 19.8	22 / 25	30 / 30
<b>WMAHV2000AB*</b>	0 / 0	4.4 / 4.4	15 / 15	---	---	---
HKR-03*	10.8 / 12.5	18 / 20	20 / 20	---	---	---
HKR-05* / 05C*	17.1 / 19.8	26 / 29	30 / 30	---	---	---
HKR-06*	21.6 / 25.0	31 / 36	40 / 40	---	---	---
HKR-08* / -08C*	25.3 / 29.2	36 / 41	60 / 60	---	---	---
HKR-10* / -10C*	34.3 / 39.6	46 / 53	60 / 60	---	---	---
HKR-15C*	34.3 / 39.6	46 / 53	60 / 60	17.2 / 19.8	22 / 25	30 / 30
HKR-20C*	34.3 / 39.6	46 / 53	60 / 60	34.3 / 39.6	43 / 50	60 / 60

<sup>1</sup> Minimum Circuit Ampacity @ 208 / 240 V

<sup>2</sup> Maximum Overcurrent Protection Device @ 208 / 240 V

\* Revision level that may or may not be designated

C Circuit breaker option

^ Heat Kit requires three-phase power supply

**Note:** All HKR ampacities noted above include air handler motor amps, excluding three-phase models.

# PRODUCT SPECIFICATIONS

## ELECTRICAL DATA FOR GPC "H" SERIES PACKAGED UNITS (BLOWER ONLY, HEAT MODE)

Model and Heat Kit Usage	Circuit #1		Circuit #2		Actual kW / BTU@ 240V
	MCA <sup>1</sup>	MOP <sup>2</sup>	MCA <sup>1</sup>	MOP <sup>2</sup>	
<b>WPC4324H21A, AB</b>	1.5 / 1.5	--	--	--	--
HKR-05*, HKR-05C*	24 / 27	30 / 30	--	--	4.75 / 16,200
HKR-08*, HKR-08C*	33 / 38	40 / 40	--	--	7 / 23,800
HKR-10*, HKR-10C*	45 / 51	60 / 60	--	--	9.5 / 32,400
<b>WPC4330H21A, AB</b>	2.4 / 2.4	--	--	--	--
HKR-05*, HKR-05C*	24 / 27	30 / 30	--	--	4.75 / 16,200
HKR-08*, HKR-08C*	34 / 39	40 / 40	--	--	7 / 23,800
HKR-10*, HKR-10C*	45 / 52	60 / 60	--	--	9.5 / 32,400
HKR-15*, HKR-15C*	45 / 52	60 / 60	22 / 25	30 / 30	14.25 / 48,600
<b>WPC4336H21A, AB</b>	2.4 / 2.4	--	--	--	--
HKR-05*, HKR-05C*	24 / 27	30 / 30	--	--	4.75 / 16,200
HKR-08*, HKR-08C*	34 / 39	40 / 40	--	--	7 / 23,800
HKR-10*, HKR-10C*	45 / 52	60 / 60	--	--	9.5 / 32,400
HKR-15*, HKR-15C*	45 / 52	60 / 60	22 / 25	30 / 30	14.25 / 48,600
<b>WPC4342H21A, AB</b>	3.9 / 3.9	--	--	--	--
HKR-05*, HKR-05C*	25 / 27	30 / 30	--	--	4.75 / 16,200
HKR-08*, HKR-08C*	34 / 39	40 / 40	--	--	7 / 23,800
HKR-10*, HKR-10C*	46 / 52	60 / 60	--	--	9.5 / 32,400
HKR-15*, HKR-15C*	46 / 52	60 / 60	22 / 25	30 / 30	14.25 / 48,600
HKR-20*, HKR-20C*	46 / 52	60 / 60	43 / 49	60 / 60	19.5 / 66,500
<b>WPC4348H21A, AB</b>	3.9 / 3.9	--	--	--	--
HKR-05*, HKR-05C*	25 / 28	30 / 30	--	--	4.75 / 16,200
HKR-08*, HKR-08C*	34 / 40	40 / 40	--	--	7 / 23,800
HKR-10*, HKR-10C*	46 / 53	60 / 60	--	--	9.5 / 32,400
HKR-15*, HKR-15C*	46 / 52	60 / 60	22 / 25	30 / 30	14.25 / 48,600
HKR-20*, HKR-20C*	46 / 52	60 / 60	43 / 49	60 / 60	19.5 / 66,500
<b>WPC4360H21A, AA</b>	6.0 / 6.0	--	--	--	--
HKR-05*, HKR-05C*	26 / 30	30 / 30	--	--	4.75 / 16,200
HKR-08*, HKR-08C*	36 / 40	40 / 40	--	--	7 / 23,800
HKR-10*, HKR-10C*	48 / 54	60 / 60	--	--	9.5 / 32,400
HKR-15*, HKR-15C*	48 / 54	60 / 60	22 / 25	30 / 30	14.25 / 48,600
HKR-20*, HKR-20C*	48 / 54	60 / 60	43 / 49	60 / 60	19.5 / 66,500

<sup>1</sup> Minimum Circuit Ampacity @ 208 / 240 V

<sup>2</sup> Maximum Overcurrent Protection Device @ 208 / 240 V

\* Revision level that may or may not be designated

C Circuit breaker option

^ Heat Kit requires three-phase power supply

NOTE: All HKR ampacities noted above include air handler motor amps, excluding three-phase models.



## ELECTRICAL DATA FOR GPH "H" SERIES PACKAGED UNITS (BLOWER ONLY, HEAT MODE)

Model and Heat Kit Usage	Circuit #1		Circuit #2		Actual kW / BTU@ 240V
	MCA <sup>1</sup>	MOP <sup>2</sup>	MCA <sup>1</sup>	MOP <sup>2</sup>	
<b>WPH4324AH</b>	1.5 / 1.5	--	--	--	--
HKR-05*, HKR-05C*	24 / 27	30 / 30	--	--	4.75 / 16,200
HKR-08*, HKR-08C*	33 / 38	40 / 40	--	--	7 / 23,800
HKR-10*, HKR-10C*	45 / 51	60 / 60	--	--	9.5 / 32,400
<b>WPH4330AH</b>	2.4 / 2.4	--	--	--	--
HKR-05*, HKR-05C*	24 / 27	30 / 30	--	--	4.75 / 16,200
HKR-08*, HKR-08C*	34 / 39	40 / 40	--	--	7 / 23,800
HKR-10*, HKR-10C*	45 / 52	60 / 60	--	--	9.5 / 32,400
HKR-15*, HKR-15C*	45 / 52	60 / 60	22 / 25	30 / 30	14.25 / 48,600
<b>WPH4336AH</b>	2.4 / 2.4	--	--	--	--
HKR-05*, HKR-05C*	24 / 27	30 / 30	--	--	4.75 / 16,200
HKR-08*, HKR-08C*	34 / 39	40 / 40	--	--	7 / 23,800
HKR-10*, HKR-10C*	45 / 52	60 / 60	--	--	9.5 / 32,400
HKR-15*, HKR-15C*	45 / 52	60 / 60	22 / 25	30 / 30	14.25 / 48,600
<b>WPH4342AH</b>	3.9 / 3.9	--	--	--	--
HKR-05*, HKR-05C*	25 / 27	30 / 30	--	--	4.75 / 16,200
HKR-08*, HKR-08C*	34 / 39	40 / 40	--	--	7 / 23,800
HKR-10*, HKR-10C*	46 / 52	60 / 60	--	--	9.5 / 32,400
HKR-15*, HKR-15C*	46 / 52	60 / 60	22 / 25	30 / 30	14.25 / 48,600
HKR-20*, HKR-20C*	46 / 52	60 / 60	43 / 49	60 / 60	19.5 / 66,500
<b>WPH4348AH</b>	3.9 / 3.9	--	--	--	--
HKR-05*, HKR-05C*	25 / 28	30 / 30	--	--	4.75 / 16,200
HKR-08*, HKR-08C*	34 / 40	40 / 40	--	--	7 / 23,800
HKR-10*, HKR-10C*	46 / 53	60 / 60	--	--	9.5 / 32,400
HKR-15*, HKR-15C*	46 / 52	60 / 60	22 / 25	30 / 30	14.25 / 48,600
HKR-20*, HKR-20C*	46 / 52	60 / 60	43 / 49	60 / 60	19.5 / 66,500
<b>WPH4360AH</b>	6.0 / 6.0	--	--	--	--
HKR-05*, HKR-05C*	26 / 30	30 / 30	--	--	4.75 / 16,200
HKR-08*, HKR-08C*	36 / 40	40 / 40	--	--	7 / 23,800
HKR-10*, HKR-10C*	48 / 54	60 / 60	--	--	9.5 / 32,400
HKR-15*, HKR-15C*	48 / 54	60 / 60	22 / 25	30 / 30	14.25 / 48,600
HKR-20*, HKR-20C*	48 / 54	60 / 60	43 / 49	60 / 60	19.5 / 66,500

<sup>1</sup> Minimum Circuit Ampacity @ 208 / 240 V

<sup>2</sup> Maximum Overcurrent Protection Device @ 208 / 240 V

\* Revision level that may or may not be designated

C Circuit breaker option

^ Heat Kit requires three-phase power supply

# PRODUCT SPECIFICATIONS

## ELECTRICAL DATA FOR GPC "M" SERIES PACKAGED UNITS (BLOWER ONLY, HEAT MODE)

Model & Heat Kit Usage	Circuit #1		Circuit #2		Actual kW / BTU@ 240V
	MCA <sup>1</sup>	MOP <sup>2</sup>	MCA <sup>1</sup>	MOP <sup>2</sup>	
<b>WPC4336AM</b>	1.9 / 1.9	--	--	--	--
HKR-05*, HKR-05C*	24 / 27	30 / 30	--	--	4.75 / 16,200
HKR-08*, HKR-08C*	34 / 39	40 / 40	--	--	7.0 / 23,800
HKR-10*, HKR-10C*	45 / 52	60 / 60	--	--	9.5 / 32,400
HKR-15*, HKR-15C*	45 / 52	60 / 60	22 / 25	30 / 30	14.25 / 48,600
<b>WPC4348AM</b>	5.8 / 5.8	--	--	--	--
HKR-05*, HKR-05C*	25 / 28	30 / 30	--	--	4.75 / 16,200
HKR-08*, HKR-08C*	38 / 40	40 / 40	--	--	7.0 / 23,800
HKR-10*, HKR-10C*	49 / 56	60 / 60	--	--	9.5 / 32,400
HKR-15*, HKR-15C*	49 / 56	60 / 60	22 / 25	30 / 30	14.25 / 48,600
HKR-20*, HKR-20C*	49 / 56	60 / 60	43 / 49	60 / 60	19.5 / 66,500
<b>WPC4360AM</b>	7.6 / 7.6	--	--	--	--
HKR-05*, HKR-05C*	29 / 30	30 / 30	--	--	4.75 / 16,200
HKR-08*, HKR-08C*	39 / 40	40 / 40	--	--	7.0 / 23,800
HKR-10*, HKR-10C*	51 / 58	60 / 60	--	--	9.5 / 32,400
HKR-15*, HKR-15C*	51 / 58	60 / 60	22 / 25	30 / 30	14.25 / 48,600
HKR-20*, HKR-20C*	51 / 58	60 / 60	43 / 49	60 / 60	19.5 / 66,500

<sup>1</sup> Minimum Circuit Ampacity @ 208 / 240 V

<sup>2</sup> Maximum Overcurrent Protection Device @ 208 / 240 V

\* Revision level that may or may not be designated

C Circuit breaker option

^ Heat Kit requires three-phase power supply

NOTE: All HKR ampacities noted above include air handler motor amps, excluding three-phase models.

## ELECTRICAL DATA FOR GPH "M" SERIES PACKAGED UNITS (BLOWER ONLY, HEAT MODE)

Model & Heat Kit Usage	Circuit #1		Circuit #2		Actual kW / BTU@ 240V
	MCA <sup>1</sup>	MOP <sup>2</sup>	MCA <sup>1</sup>	MOP <sup>2</sup>	
<b>WPH4324AM</b>	1.5 / 1.5	--	--	--	--
HKR-05*, HKR-05C*	24 / 27	30 / 30	--	--	4.75 / 16,200
HKR-08*, HKR-08C*	34 / 39	40 / 40	--	--	7.0 / 23,800
HKR-10*, HKR-10C*	45 / 52	60 / 60	--	--	9.5 / 32,400
<b>WPH4330AM</b>	1.5 / 1.5	--	--	--	--
HKR-05*, HKR-05C*	24 / 27	30 / 30	--	--	4.75 / 16,200
HKR-08*, HKR-08C*	34 / 39	40 / 40	--	--	7.0 / 23,800
HKR-10*, HKR-10C*	45 / 52	60 / 60	--	--	9.5 / 32,400
HKR-15*, HKR-15C*	45 / 52	60 / 60	22 / 25	30 / 30	14.25 / 48,600
<b>WPH4336AM</b>	1.9 / 1.9	--	--	--	--
HKR-05*, HKR-05C*	24 / 27	30 / 30	--	--	4.75 / 16,200
HKR-08*, HKR-08C*	34 / 39	40 / 40	--	--	7.0 / 23,800
HKR-10*, HKR-10C*	45 / 52	60 / 60	--	--	9.5 / 32,400
HKR-15*, HKR-15C*	45 / 52	60 / 60	22 / 25	30 / 30	14.25 / 48,600
<b>WPH4348AM</b>	5.8 / 5.8	--	--	--	--
HKR-05*, HKR-05C*	25 / 28	30 / 30	--	--	4.75 / 16,200
HKR-08*, HKR-08C*	38 / 40	40 / 40	--	--	7.0 / 23,800
HKR-10*, HKR-10C*	49 / 56	60 / 60	--	--	9.5 / 32,400
HKR-15*, HKR-15C*	49 / 56	60 / 60	22 / 25	30 / 30	14.25 / 48,600
HKR-20*, HKR-20C*	49 / 56	60 / 60	43 / 49	60 / 60	19.5 / 66,500
<b>WPH4360AM</b>	7.6 / 7.6	--	--	--	--
HKR-05*, HKR-05C*	29 / 30	30 / 30	--	--	4.75 / 16,200
HKR-08*, HKR-08C*	39 / 40	40 / 40	--	--	7.0 / 23,800
HKR-10*, HKR-10C*	51 / 58	60 / 60	--	--	9.5 / 32,400
HKR-15*, HKR-15C*	51 / 58	60 / 60	22 / 25	30 / 30	14.25 / 48,600
HKR-20*, HKR-20C*	51 / 58	60 / 60	43 / 49	60 / 60	19.5 / 66,500
<b>WPH4524AM</b>	4.1 / 4.1	--	--	--	--
HKR-05*, HKR-05C*	24 / 27	30 / 30	--	--	4.75 / 16,200
HKR-08*, HKR-08C*	34 / 39	40 / 40	--	--	7.0 / 23,800
HKR-10*, HKR-10C*	45 / 52	60 / 60	--	--	9.5 / 32,400
<b>WPH4536AM</b>	4.1 / 4.1	--	--	--	--
HKR-05*, HKR-05C*	24 / 27	30 / 30	--	--	4.75 / 16,200
HKR-08*, HKR-08C*	34 / 39	40 / 40	--	--	7.0 / 23,800
HKR-10*, HKR-10C*	45 / 52	60 / 60	--	--	9.5 / 32,400
HKR-15*, HKR-15C*	45 / 52	60 / 60	22 / 25	30 / 30	14.25 / 48,600
<b>WPH4548AM</b>	5.8 / 5.8	--	--	--	--
HKR-05*, HKR-05C*	25 / 28	30 / 30	--	--	4.75 / 16,200
HKR-08*, HKR-08C*	38 / 40	40 / 40	--	--	7.0 / 23,800
HKR-10*, HKR-10C*	49 / 56	60 / 60	--	--	9.5 / 32,400
HKR-15*, HKR-15C*	49 / 56	60 / 60	22 / 25	30 / 30	14.25 / 48,600
HKR-20*, HKR-20C*	49 / 56	60 / 60	43 / 49	60 / 60	19.5 / 66,500
<b>WPH4560AM</b>	7.6 / 7.6	--	--	--	--
HKR-05*, HKR-05C*	29 / 30	30 / 30	--	--	4.75 / 16,200
HKR-08*, HKR-08C*	39 / 40	40 / 40	--	--	7.0 / 23,800
HKR-10*, HKR-10C*	51 / 58	60 / 60	--	--	9.5 / 32,400
HKR-15*, HKR-15C*	51 / 58	60 / 60	22 / 25	30 / 30	14.25 / 48,600
HKR-20*, HKR-20C*	51 / 58	60 / 60	43 / 49	60 / 60	19.5 / 66,500

See Notes on previous page.

